



In association with



SWIFT

GUIDE TO

VISITING THE NEC SHOW

Here's how to make the most of your October visit!



69

Plan your visit

Key info on how to buy tickets, accessibility and where to stay

70

Show map

Plot your route around the halls

72

How to buy at a show

Top tips for finding the 'van that will best suit your needs

74

Motorhome show stars

The latest new models that you can expect to see at the NEC

80

What's on?

Celebrity speakers, the latest kit, and a chance to win show tickets!



GET THE LATEST SHOW NEWS!

Visit our website for all the latest show information, including during the show itself – simply scan the QR code to get started...

Also available as a FREE ebook

see www.practicalmotorhome.com/know-how to download yours!

In association with



SWIFT

www.swiftgroup.co.uk | November 2023 67

CUT ALONG DOTTED LINE



SWIFT



VOYAGER



Introducing the all NEW Swift Voyager 4 Series

Built on a Ford chassis with a new luton bed, Voyager has been designed for families who love to explore. With 3 popular layouts to choose from and a refined and sleek interior, Voyager 4 Series maximises space without compromising on design or onboard amenities.

See the **NEW** Voyager 4 Series for yourself on the Swift stand, Hall 6 at the NEC Motorhome & Caravan Show, 17th - 22nd October.

Find out more at [swiftgroup.co.uk](https://www.swiftgroup.co.uk)



Your Home Anywhere

 **MANUFACTURED
IN BRITAIN**

PLAN YOUR VISIT TO THE NEC SHOW

Check the logistics before you go and you'll enjoy a superb day out! Here's everything you need to know to make the most of your visit

Opening times

The show runs from 17–22 October 2023 and is open from 10am to 6pm each day.

Tickets

Tickets for the show can be purchased for £12.50 until 16 October, after which the price increases to £15.50. There's also a £1.25 transaction fee applied.

Children up to the age of 15 get in for free when they accompany a paying ticket holder, but free tickets still need to be acquired online.

Similarly, a carer is also allowed in for free when accompanying a Registered Disabled visitor with a valid show ticket – a free carer's ticket will be required.

Tickets can only be used on the day they are purchased for, and buy before you set off – tickets are not sold at the door! You can purchase your tickets by visiting www.mcshow.co.uk.

Parking

Parking at the Motorhome and Caravan Show is included in the price of your

ticket. Car parks are open from 7am to 11pm – once you reach the NEC, keep your eyes peeled for the car park signposted 'Motorhome and Caravan Show'. Overnight parking is not allowed.

Disabled parking is also available, but you can't pre-book it – the NEC asks you to bring your Blue Badge with you, too.

Accessibility

Don't forget your Blue Badge. If you plan to take a taxi to the NEC and you have your Blue Badge, you can be dropped off (and picked up) at the main entrances.

The NEC provides wheelchairs free of charge for Blue Badge holders (otherwise £5), but recommends bringing your own if you can, because the supply is limited.

There is also the option of hiring mobility scooters (£15 per day), with booking in advance encouraged, by emailing info@necgroup.co.uk.

To find out more about accessibility at the Motorhome and Caravan Show, go to:

www.mcshow.co.uk/plan-your-visit/disabled-access

Where to stay

The closest campsite to the NEC is the Caravan & Motorhome Club's temporary site. The campsite provides hook-up and fresh-water and waste disposal, as well as toilets. It is located in NEC Birmingham North Car Parks 10 and 10a.

www.caravanclub.co.uk/whats-on/temporary-sites/NEC-October-temporary-campsite

You'll find a number of other sites in the surrounding area, including Stanmore Hall Touring Park, a finalist in our *Top 100 Sites Guide 2023*. Another nearby option is Kingsbury Water Park.

www.morris-leisure.co.uk/caravan-parks/stanmore-hall-bridgnorth.htm

www.campingandcaravanningclub.co.uk/campsites/uk/west-midlands/sutton-coldfield/kingsbury-water-park-camping-and-caravanning-club-site

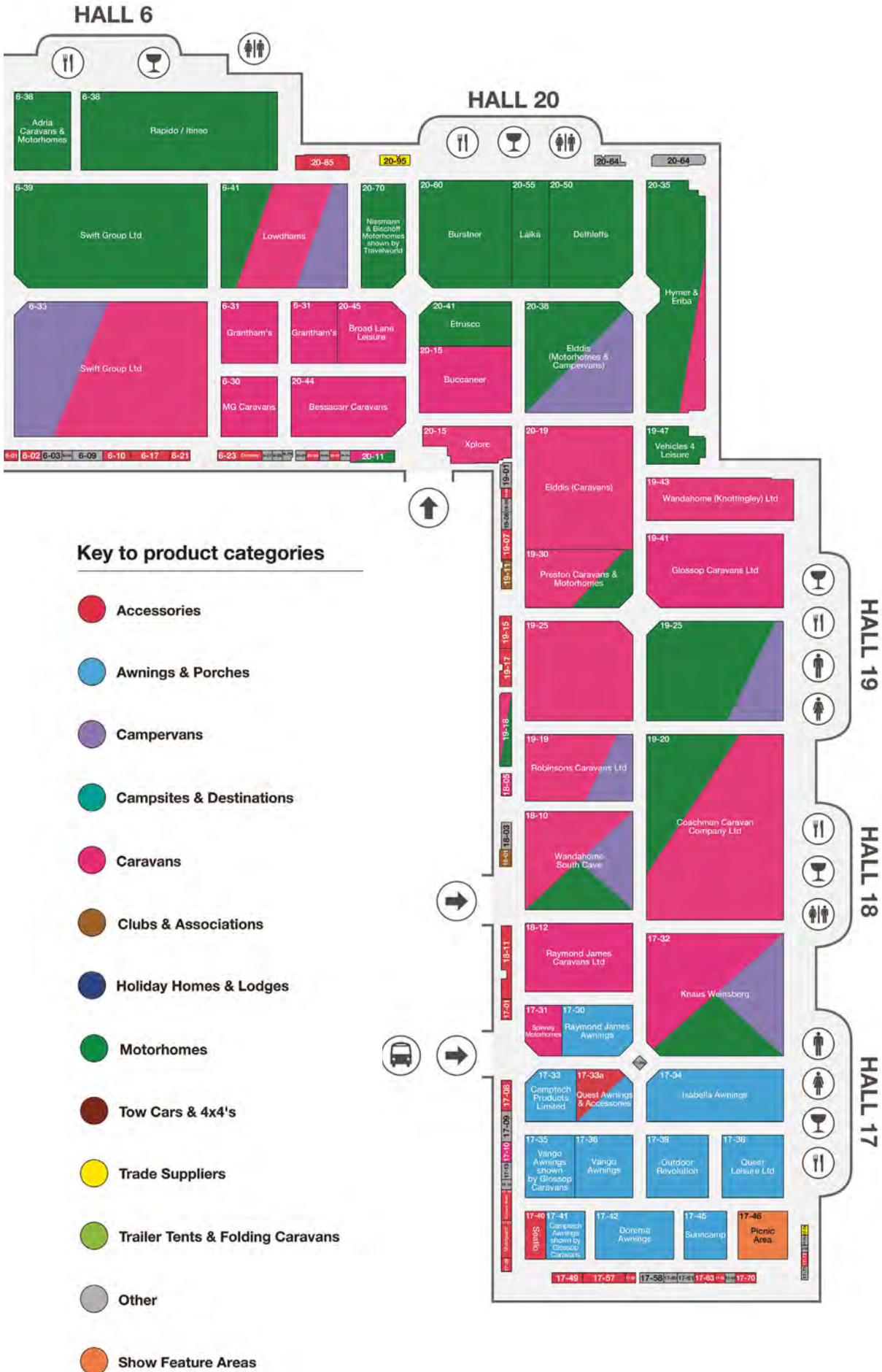
WIN!
TICKETS
TO THE
NEC SHOW
See p81



Plan ahead and enjoy a great day out at the NEC



CUT ALONG DOTTED LINE



CUT ALONG DOTTED LINE

HOW TO BUY A MOTORHOME AT A SHOW

We reveal 14 essential tips for getting the most from any show visit, and finding the ideal motorhome for your needs!

Research brands before you visit the show. Check out our annual Owner Satisfaction Survey results – each year, *Practical Motorhome* readers and members of The Camping and Caravanning Club tell us about their buying and owning experiences, both of their 'van and of their interactions with the supplying dealer.

We then draw up tables of those brands and dealers who have impressed them the most – it's essential reading for anyone considering buying, whether at a show or elsewhere. To see the latest results, go to practicalmotorhome.com/OSS2023.

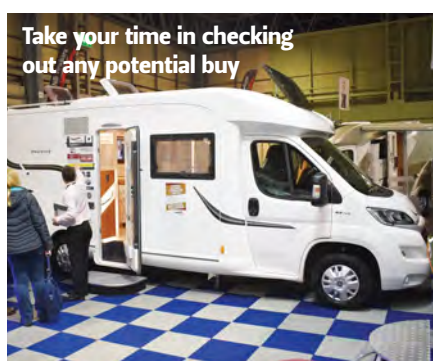
Once you've decided on the brand, **make a list** of all the features that you would like your new motorhome to have, including the 'must-haves' and the 'nice-to-haves'.

For example, if you're only planning to use your 'van in the summer months, there's not much point in having things like Alde-type heating (which will increase both the weight and the cost). Conversely, if you're a hardy soul who's going away whatever the season, there might be.

If you're a family with young children, while a fixed-bed layout may look very attractive, it might not be that practical for your use. Our Buyer's Guide (featured in each issue of *Practical Motorhome*) can help narrow down potential models that could best suit your needs – work out the number of berths you'll require, and take it from there.

Think carefully about your budget and don't forget that you will also need to factor in the additional cost of insurance, kit, a cover and more.

Make sure that you can safely and legally drive your potential new motorhome. You can find out more about licence categories and weight restrictions on our website, at www.practicalmotorhome.com/advice/motorhome-driving-tips.



Take your time in checking out any potential buy

The next step is to **plan your route** around the show. Take a look at our map of the NEC Motorhome & Caravan Show on p70, if that's where you are planning to visit – use a pen to mark out your route to save time and shoe leather! Factor in some breaks, too – you'll need them as the show is large.

Now it's time to start **looking inside motorhomes!** Your first impressions are vital, but be aware that most of the vehicles on display will have some form of extra lighting (usually tucked up into

the rooflights) to give what might perhaps be a false impression of light levels.

Try not to be drawn in by showroom glitz, but pay great attention to the detail. Imagine what the motorhome will look like without the show lights – is there enough illumination for you to be able to read comfortably during the evening?

Don't be afraid to **spend as much time in a specific model** as you want, so you can check that it's just right for you. Kick off your shoes and lie down on the beds – are they comfortable and long enough? Open the drawers and lockers – will there be enough space for all of your kit? Does the washroom door intrude into the kitchen area when you open it, and if so, can you live with that? Don't let a dealer rush you – take your time and test out every aspect of the layout.

For more on choosing the right motorhome, see p106.

It's highly unlikely that you'll find the 'perfect' motorhome, because they are all a compromise in one way or



List your priorities to narrow down the choice of models



Keep an eye out for any great deals, including valuable extras

CUT ALONG DOTTED LINE

another, but if you can live with small foibles, **don't write off that particular model**. If it would be an irritation (and can't be altered) every time you use the vehicle, then it's best to look elsewhere.

Keep an eye out for great deals at the show. Buying at an event can bring **additional benefits**, including 'freebies' from manufacturers or dealers. These could include an awning or other valuable options, or exclusive show-only discounts on vehicles that are sold there.

If you're a seasoned motorhomer and you know a good dealer who is not too far from your home, check to see if they're represented at the show.

If you're new to the game, be careful. **Find out where any dealer you speak to is based**. It might be that you're offered a fantastic deal on a new motorhome, but if their HQ is a couple of hundred miles away from where you live, it's likely to be a poor deal overall.

Why? Sadly, chances are, you will need something rectifying under warranty at some point, so you don't want to have to travel for hours to get the work done.

Take lots of photographs of models you're interested in. That way, you can go away and discuss your potential purchase over a coffee, and have images to refer to in case of queries.

Don't forget to take a photograph of the outside of each motorhome, so you know

which one is which! It's also a good idea to take a snap of the information board you'll find outside each model, for reference.

How will you finance your new 'van? If it's a loan, finance arrangements are usually available at shows. The main finance companies normally maintain a presence at these events, so you should be able to get a quick decision. You might also want to consider part-exchange.

Only you can decide the best way to fund your purchase, but either way, **set your budget and stick to it** – it's all too easy to be tempted to spend more than you planned in the heat of the moment.

Remember you **don't have to sign on the dotted line** there and then. If possible, speak to a couple of dealers. Ask for an exact price from the dealer: if you come across one who sidetracks and won't give you a firm price, walk away and seek another.

Bear in mind, though, that by buying after the show ends, you might miss out on any special event deals.

Chances are you'll be given a date for manufacture, but don't be too surprised if that comes and goes. **Stay in close contact with the dealer** for the latest updates about your new vehicle.



Plan your route to make best use of your time

NEC SHOW PREVIEW

Here is our guide to just some of the brilliant things you can expect to see at the October 2023 NEC Show when you get down to browsing the new models and the latest accessories!

Adria Stands 7.30, 7.35 and 7.36



There should be a good spread of vehicles for your delectation at the Adria stands.

There is a new Supersonic, for example – the 7.8m-long 780DL, with fixed single beds in the back – taking the model tally in this Mercedes-based range to five.

Then there is the new range of Twin Max van conversions, based on a MAN chassis. The three layouts include some innovative space-saving ideas, dealing with such things as how to get a drop-down bed out of the way when you don't need it.

The Active Duo, Adria's first campervan based on a Renault Trafic, will finally be making its proper debut at this October's show. You should also be able to see the new Matrix and Coral models, which are based on a Mercedes chassis.

www.adria.co.uk

Autohaus Stand 12.150a

With continuing problems in the supply of base vehicles, Autohaus has turned to new suppliers and at this October's show, will be displaying its first-ever conversion based on the new Renault Trafic.

The Creston, on a top-of-the-range Trafic, is named, like all of Autohaus's models, for a variety of apple – as you would expect from a Somerset company.

www.autohaus.co.uk

Auto-Sleepers Stand 8.25



Chief among the 'vans on display at the Auto-Sleepers stand will be the new M Star – a two-berth van conversion based on the long-wheelbase Mercedes Sprinter. You can expect a high spec, plus loads of driver assistance technology.

There will also be an extensive line-up of continuing Auto-Sleeper van conversions and coachbuilt models, built on both Mercedes and Peugeot vehicles.

www.auto-sleepers.com



Auto-Trail Stand 8.30

Auto-Trail is promising to launch a new range at this October's show, although precise details were still under wraps as this magazine was going to press.

The Grimsby firm will also be showcasing all its other ranges of van conversions, low-profiles and overcabs, as well as the luxurious Grande Frontier A-class models.

www.auto-trail.co.uk

Bailey of Bristol Stand 19.25

The big news on the Bailey stand is the launch of the Endeavour, the company's first-ever van conversion.

Coming 12 years after Bailey branched out into motorhomes, the new model is based on a Ford Transit and has been built in partnership with Ford Pro. It is launching just as Bailey celebrates its 75th birthday.

In addition, you should be able to see a good selection of the Bristol company's coachbuilt motorhomes, including the two most recent models in its more Continentally inspired Adamo range, the 75-4T and the 60-4.

www.baileyofbristol.co.uk

Benimar Stand 8.25

Benimar Tessoro 481



Head to the Marquis Leisure stand to see the full range of Spanish-built Benimar motorhomes, which the dealership sells exclusively. This season, the Mileo range has been given a totally new look.

Models from the other two line-ups, the more budget-priced Primero and the Ford-based Tessoro, will also be shown.

www.marquisleisure.co.uk

Bürstner Stand 20.60



Bürstner Playa

Bürstner will be offering its Playa campervan at the show as a special Limited Edition model. It comes with 17-inch alloy wheels, a cooled glovebox, a diesel parking heater, blackout blinds, a 41-litre compressor refrigerator, and Isofix anchor points on each of the rear travel seats that also come with cushions you can stow away easily. The 50-litre onboard water tank is a notably generous size for a campervan.

www.buerstner.com

Carthago Stand 9.26

The luxury German manufacturer will be launching only one new model this year, and it will be on its stand for show visitors to view. Whether in low-profile or A-class mode, whether you go for a Fiat or a Mercedes base vehicle, or whether it's a standard model or with Superior spec, the 145 RB LE is just over 7m long, and comes with single beds at the back.

www.carthago.com

Chausson Stand 8.20

This season, Chausson has introduced a second model – the X650 – to its X crossover range, which includes an end dressing room. There's also a special edition Etape range, based on a 140bhp Peugeot Boxer, while its van conversions now come as a special edition with a 170bhp engine, automatic transmission and a pop-up roof. Much of this should be on the stand for visitors to discover.

www.chausson-motorhomes.com

Dethleffs Stand 20.50



Dethleffs Globebus Go T45

Dethleffs is getting in on the trend for compact coachbuilds, with the launch in the UK of the new Globebus Go range. The smaller of the two models in the line-up, the T15, has a transverse bed at the rear, while its sibling, the T45, has fixed single beds and is 6.69m long. Both vehicles are only 2.2m wide, so they should be easier to manoeuvre down narrow city streets and twisting country lanes.

www.dethleffs.co.uk

Erwin Hymer UK

Stands 20.19 and 20.38

EHG UK's Elddis Autoquest range of campervans have been unavailable for immediate purchase for all of the 2023 season, due to problems in the supply chain. But they could be just coming on line again as we head into the new season.

Here you will also find the coachbuilt Autoquests, the compact Accordo line-up and the more upmarket Encore range.

www.elddis.co.uk

Frankia

Stands 10.45, 10.50 and 10.60



Frankia Yucon

This upmarket German brand may still only have one dealership in the UK – SMC in Newark, Nottinghamshire – but it is no longer just concerned with A-classes and liners. At this show, you can see the new Mercedes-based 4x4 vehicle produced by Yucon, Frankia's van conversion brand.

Raised higher for better road clearance, this vehicle includes an innovative way of folding the rear beds for a mini-garage. It looks the part, too, with plenty of smart monochrome in its colour scheme.

www.frankia.com/en



Carthago C-Tourer 145 RB LE

CUT ALONG DOTTED LINE



Hillside Leisure Stand 12.15

Hillside, one of Britain's best-known van converters, will be showing its wide range of largely VW-based campervans, including the T6.1-based Birchover, the Cromford, featuring an end kitchen, and the Hopton, which is based on the VW Crafter.

🌐 www.hillsideleisure.co.uk

Jerba Stand 11.55

Based at North Berwick in East Lothian, Jerba Campervans is famous for building its own pop-up roofs with mesh windows in the removable canvas that are resistant not just to mosquitoes, but also to the much smaller Scottish midge.

The employee-owned company will be displaying all five of its models, all named for famous places in Scotland – the Tiree, Cromarty, Taransay, Sanna and Jura.

🌐 www.jerbacampervans.co.uk

Laika Stand 20.55

The entry-level Kosmo range has been given an update for the 2024 season, while there is a new model to explore in the upmarket Kreos range, the H 5109, with fixed single beds. Both should be making an appearance at the show.

🌐 www.laika.it/en



Malibu Comfort Van



Jerba Tiree

Le Voyageur Stand 10.50

Head to the Pilote Group's upmarket brand to see the new Eterna range, which has replaced the old Classic. This comes on Al-Ko's STC chassis, which provides a flat floor inside and a lower centre of gravity when the vehicle is being driven.

🌐 www.levoyageur-motorhome.uk

Malibu Stands 9.27 and 9.28

Carthago's budget brand has been expanding its selection of van conversions for the past few years. This season sees the introduction of two new family-of-four models, the Malibu Comfort Van 600 DB and the 640 LE. Both come with a pop-up roof – unusually manufactured in-house

by Carthago and produced at its new factory premises at Ormož, in Slovenia.

🌐 www.malibu-carthago.com

McLouis Stand 8.25

Italian brand McLouis, in partnership with its fellow Trigano Group subsidiary Auto-Sleepers, produces the Fusion range of low-profiles exclusively for the UK market. You will be able to see three of these new models on display at the Marquis Leisure stand.

🌐 www.mclouisfusion.co.uk

Mobilvetta Stand 8.25

Head to the Marquis Leisure stand as well to see the latest models from Italian brand Mobilvetta, including the clearly nautically inspired K-Yacht Tekno Line range, the A-class range and the Kea low-profiles.

🌐 www.marquisleisure.co.uk

Morelo Stand 9.50



Morelo Empire Liner

A liner from Morelo (which you usually have to queue to see) is often one of the star attractions at the Motorhome and Caravan Show. This year, the new Morelo Empire Liner 98MB, built on a Mercedes Actros chassis and weighing 18 tonnes, will be the largest Morelo model Premium Motorhomes has ever brought to the NEC.

It has an island bed at the rear, a huge washroom/dressing room spread across the centre, and a spacious front lounge.

Other more conventional models on display should include the Palace 90M, also with an island bed, the Loft 79F, with a transverse bed, and the Home 82LS, which provides fixed single beds.

🌐 www.morelo-reisemobile.de/en

Moto-Trek Leisure-Treka



Moto-Trek Stand 12.60

Moto-Trek will be focusing in particular on its Leisure-Treka van conversions at this year's show. You can check out the RL model, with a spacious rear lounge, the ELD, with extra travel seats and the option to add a rear double bunk or a child's bed, and the EB, with an L-shaped front lounge and an end washroom. www.moto-trek.co.uk

Niesmann+Bischoff Stand 20.70

Niesmann+Bischoff Flair 920



The Erwin Hymer Centre Travelworld stand will include a range of models from the German group's most upmarket brand. There's the Flair 920, based on an Iveco chassis (so with an MTPLM of 7.49 tonnes) and with a washroom that wouldn't look out of place in a penthouse apartment. Then there are two models from the low-profile iSmove range, the 7.3 and the 6.9E, which both have MTPLMs of less than 3500kg and so could be driven by a much wider range of buyers. www.motorhomes.co.uk

Pilote Stand 10.60

There should be an opportunity to see both models from the new Atlas range of low-profiles on the Pilote stand. Based on the Ford Trail Transit chassis, with limited slip differential making the vehicles more suitable for off-road travel, the line-up includes the A696G, with a transverse bed, and the new A656D, which comes with an end dressing room. Look out, too, for some smart new van conversions, including the new-look V600G and the Joa Camp, from Pilote's budget range of vehicles. www.pilote-motorhome.uk

Rapido Stands 6.38 and 11.145

Two models in particular should stand out among the many new vehicles on display at the Rapido stand. The latest model in the French company's compact range, the C03, is a transverse-bed 'van. But at 6.19m, it has just enough length to give you that extra bit of comfort. The conventional-width 606F, meanwhile, manages to include a large end washroom and a sizeable kitchen in its 6.69m of length. The 6 series as a whole has had a facelift this year. Models from Rapido Group's other two brands – Itineo and Dreamer – that are likely to be on display include the PS700, the first ever six-berth vehicle in Itineo's Cozy range. www.rapido.fr



Itineo PS700

CUT ALONG DOTTED LINE

Swift Voyager 475



Swift Stands 6.33 and 6.39

Proving that overcabs are far from fading away, Swift will be launching a Voyager 4 range of overcabs at the show, featuring three models, to complement the Voyager 5 low-profiles it revealed last season.

The three models include the 475, a five berth with a rear lounge, the five-berth 485 with fixed single beds at the back, and the four-berth 494, with an island bed.

The new 'vans come with the same spec as the Voyager 5s, including external cold water showers and barbecue points, and concertina cab blinds. The 475 and 485 both provide three travel seats: two forward-facing and one rearward-facing.

Also on display on the Swift stand will be the Monza, the campervan based on the people-mover Ford Tourneo, the compact Ascari range, and the Carrera range of van conversions, including the new 144 that is reviewed on p86 of this magazine.

www.swiftgroup.co.uk

Vanworx Stand 11.135

Van converter Vanworx will be showing its MaxTraxx 4x4 campervan, which is designed for off-road touring and can be based on either a VW Crafter or a MAN TGE. While you're there, look out for the Slipper, based on a VW Highline Kombi vehicle and with a premium raising-roof.

www.vanworx.co.uk

Weinsberg Stand 17.32

This year, the Weinsberg stand should be showing the X-Cursion CUV, the first Weinsberg vehicle based on a VW T6.1. The model, which includes a raising-roof, will be shown in Pepper spec, with a pure grey driver's cab, 17-inch VW alloy wheels and LED headlights, among other features.

www.weinsberg.com

WildAx Stand 10-20

It doesn't look as though there will be any absolutely new models on the WildAx stand. But you should see a good range of what the company has to offer, including the Altair, the Constellation XL, the Europa, the Pulsar, the Aurora Leisure XL, the Proteus and the Solaris XL with a Skyview.

www.wildaxmotorhomes.com



Weinsberg
X-Cursion CUV



Sunn Camp Swift Van Air Sun Canopy

And don't forget about awnings...

Isabella Stand 17.34



Isabella Dove

Check out the Dove, a new porch awning from Ventura, Isabella's air awning sister brand. Designed for both motorhomes and caravans, its height can be adjusted and it comes with double beading, so you should easily be able to move it on to another vehicle if you wish.
www.isabella.net

Quest Leisure Stand 7.33a

Two new and updated models should be of particular interest to motorcaravanners on the Quest Leisure stand. The Orion

driveaway awning has been updated with smart new colourways. It has single-point inflation and can take an Eris or Universal annex either side. There's also the Zodiac, a driveaway model made of ripstop fabric that has removable side panels and a full canopy. In addition, for more long-term stays, the Vega also comes in new colours.
www.miriad-products.com

Sunn Camp Stand 17.45

New models from Sunn Camp include the Swift Motor Air, a parallel-running driveaway awning with an integral front porch, a sewn-in groundsheet and a two-berth inner tent.
 The larger Touring Motor Air driveaway awning is made of highly waterproof 150D Ace Tech fabric. Also check out the Swift

Van Air Sun Canopy 260 LOW – this one is non-driveaway, but it comes with Sunn Camp's Air Volution technology, which makes putting it up a real doddle.
www.sunnecamp.co.uk

Telta
 Stand 17.30 (Raymond James)

Head to the Raymond James stand to see the full range of awnings from this relatively new company, cofounded by Max Lawless, who previously worked at Kampa, the firm his father founded.
 Among the many awnings the company offers made of nylon (which has better elasticity than polyethylene, and so can be pumped to a higher pressure) is the Pure 330 driveaway.
www.mytelta.com



Quest Leisure Westfield Orion 2.0 Line 481

CUT ALONG DOTTED LINE

WHAT'S GOING ON...

We explore what's happening around the show halls, from inspirational speakers to the latest must-have accessories

LOOK WHO'S TALKING! Head to the Inspiration Theatre for brilliant Guest Speakers



Joe Swash

Former *EastEnders* and winner of *I'm a Celebrity* Joe Swash will be swinging by the show to chat with comedian and writer Rowland Rivron.

TV presenter Joe bought a campervan during lockdown to holiday with his wife, Stacey Solomon, and young family. Stop by to hear revelations about his time on the road, top travelling tips – and no doubt a few laughs along the way.

When 18 October at 12.30pm

Top tip!

Spanning 11 halls, this huge event is the UK leisure vehicle industry's national showcase. That means a lot of walking – so wear comfortable shoes!



Marcus Leach

A regular columnist for *Practical Motorhome*, award-winning travel writer and cyclist Marcus Leach is currently engaged on a mammoth tour of Europe and beyond (p56). But he'll be back in the UK to give his talk, 'Eastern Delight: A Practical Guide to Touring in Greece and Bulgaria', in which he takes us on a tour through two of Europe's most intriguing destinations.

Marcus will share first-hand advice and knowledge to help you plan your own Balkan adventure. Join him on an exploration of the wonders of Greece – combining ancient history, mythology and dazzling landscapes – and on into magical Bulgaria, with surprises at every turn.

When Daily, time TBC



Kat Bird

Travel expert Kat 'Wandering' Bird tells all about her recent adventures in Iceland, in her talk entitled 'The Land of Fire and Ice'. On an epic summer road trip that saw her driving from the UK to Iceland and back again, she explored glaciers, waterfalls, volcanoes and ice caves, all under the midnight sun.

When Daily, time TBC

Top tip!

With so much to see and do, it's good to have a plan for your day, but don't forget to factor in breaks to rest and refuel, to make the most of your visit



Highlands2Hammocks

Travelling adventurers Gemma and Campbell of the Highlands2Hammocks blog have a passion for Scotland. Here in their talk, 'Scotland's Scenic Road Trips', they give an introduction to the country as a dream destination for touring. Expect an overview of popular routes, including the North Coast 500, the subject of their latest guidebook, *Destination NC500*, along with tips on what to expect when visiting. With insights into the best times to visit, weather conditions, festivals and events, and areas of interest, this is a must-see for anyone planning to explore this beautiful nation.

When 20-22 October, time TBC

MOTORHOME MANOEUVRING

If you need a refresher course on motorhome skills or you're a first-timer in need of some tips, this free 20-minute course is a great condensed experience. The qualified instructors from the Caravan and Motorhome Club will help you build new and existing skills and offer helpful advice. All you need is a full UK driving licence. Visit the Club at stand 7.12 to book.

mcshow.co.uk/whats-on/motorhome-manoeuving/

CAMPERVAN TEST DRIVE

Thinking about downsizing? Or just curious about campervans? Use this 20-minute taster session to get some expert tips and insight from the Caravan and Motorhome Club's drivers. You'll be able to get behind the wheel of a campervan and imagine yourself on the open road, before browsing some of the show's exciting options. Visit the Club at stand 7.12 to book.

mcshow.co.uk/whats-on/campervan-test-drive/



SUPERB PRIZES TO BE WON!

While you're at the show, don't miss these superb Club competitions, for a chance to win spectacular prizes.

First up is the Caravan and Motorhome Club's holiday of a lifetime to the Canadian Rockies. The prize, worth over £12,500, is for two adults to join a 26-day escorted motorhome tour to see Calgary, Banff, Radium and much more. You can enter the Caravan and Motorhome Club competition at Stand 9.95 in Hall 9.

Or how about winning yourself a splendid new campervan? The Camping and Caravanning Club has partnered with Swift to give you the chance to win a wonderful Swift Monza, worth £65,680. Visit The Camping and Caravanning Club at Stand 8.10 in Hall 8 to enter.

ACCESSORISE THIS! Got your 'van? Now to fill it! There's plenty to buy at the show



Fire Safety Stick

An incredibly light, compact and versatile fire extinguisher, this is a safety item suitable for all leisure vehicles.

Weighing in at 215g, it has a 50-second discharge time and is certified for all major classes of fires, including cooking oils/fats. It's safe for use inside the 'van and leaves no damaging mess, so you can even leave it in the 'van to continue repressing a fire, while you escape to safety.

Stand 10.16 in Hall 10

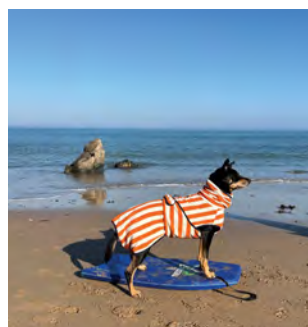


Cadac

Outdoor cooking specialist Cadac is launching two new barbecues – the Carri Chef 40 and the 2 Cook 3 Pro Deluxe QR. The Carri Chef 40 range offers a high-performance burner with automatic piezo ignition, and the unit comes with an adjustable foot on one leg, so you can keep it stable no matter how uneven the ground might be.

The 2 Cook 3 Pro Deluxe QR is packed with features, such as gas ignition protection, a bottom heat shield, dual windshields, a coffee pot stand and a grill plate handle.

Stand 8.01a in Hall 8

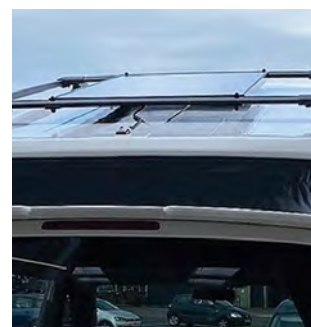


Harbour Hounds

Check out these fantastically stylish dog-drying robes, which are 100% absorbent cotton and available in six colours. They're the perfect way to keep your pet comfortable and dry after a day of messing about in the water!

We'll also be looking to see the EM Tick-Off Dog Necklace, described as a natural way to deter ticks and prevent bites while you explore in grassy areas.

Stand 9.49 in Hall 9



Solar Technology International

With solar panels now an increasingly important part of touring kit, we're hoping to see STI's new super-smart Mono High Density products. Featuring ground-breaking technology to deliver superior efficiency, these energy-dense panels are compact and powerful. Available in rigid models up to 200W and semi-flexible versions up to 290W, the panels suit a variety of power needs for leisure vehicles.

Stand 12.188 in Hall 12

For a complete list of accessory companies exhibiting at the show, visit www.mcshow.co.uk



SHOW TICKET GIVE AWAY!

We've partnered with the Motorhome and Caravan Show to give you the chance to win one of 50 pairs of tickets! Whether you're after a new vehicle, want to browse the latest releases, or are looking to talk to the different brands out there, the Motorhome and Caravan Show is quite simply the place to be.

The lucky winners will then get to visit the show on a day of their choice.

For your chance to win and to read the full T&Cs, simply head to practicalmotorhome.com/competitions before midnight on 3 October 2023 – good luck!



SWIFT

Join us at the NEC Swift Stand, Hall 6



With over 50 caravans and motorhomes on display on the Swift stand at the October Motorhome & Caravan show, it promises to be Swift's biggest and best line up yet.

To book an appointment with a Swift advisor and to find out more, head to our website at swiftgroup.co.uk/events/mc-show-2023/

**MOTORHOME
& CARAVAN
SHOW 2023**
17-22 October
NEC Birmingham


Your Home Anywhere

 **MANUFACTURED
IN BRITAIN**